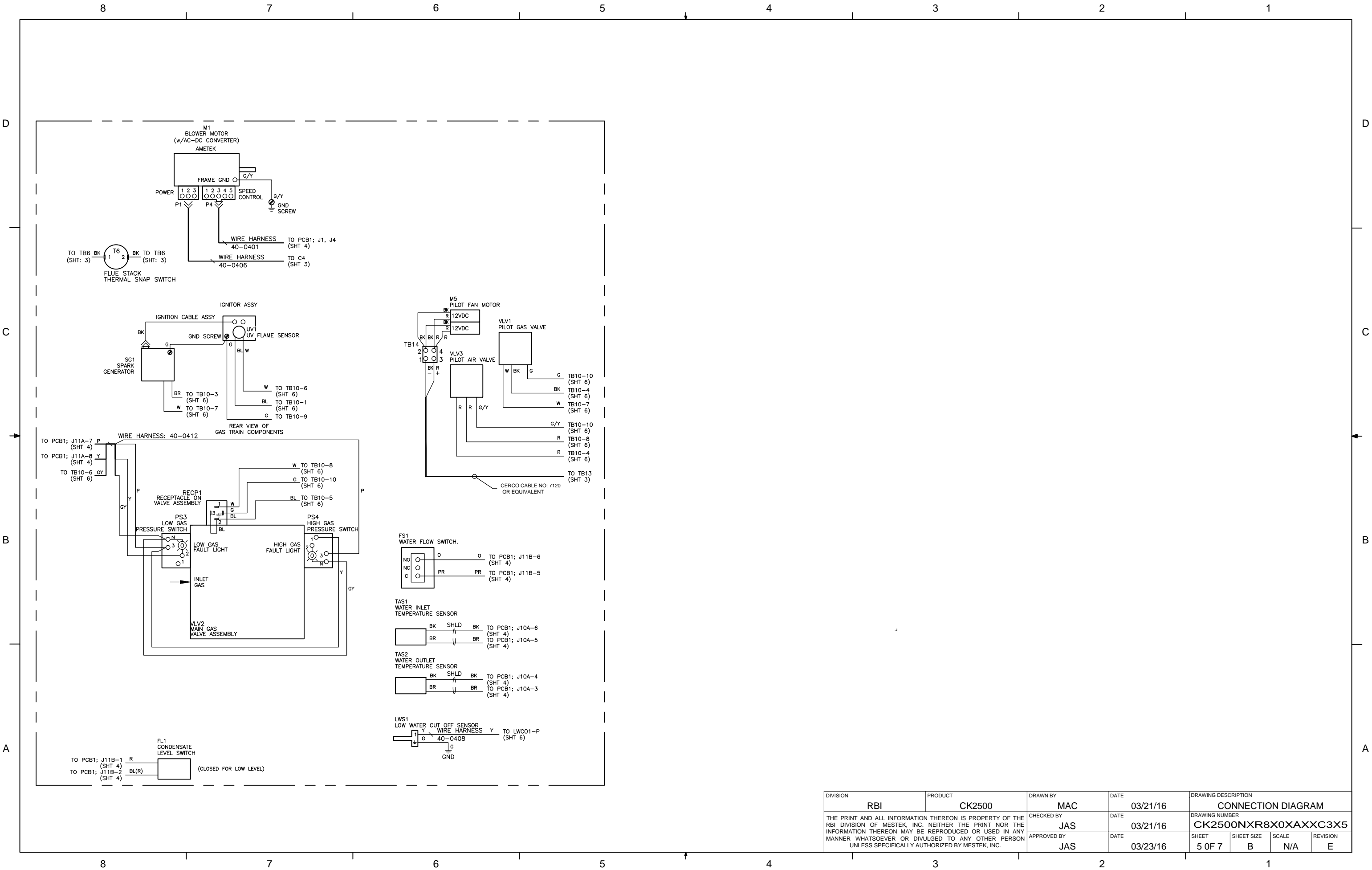
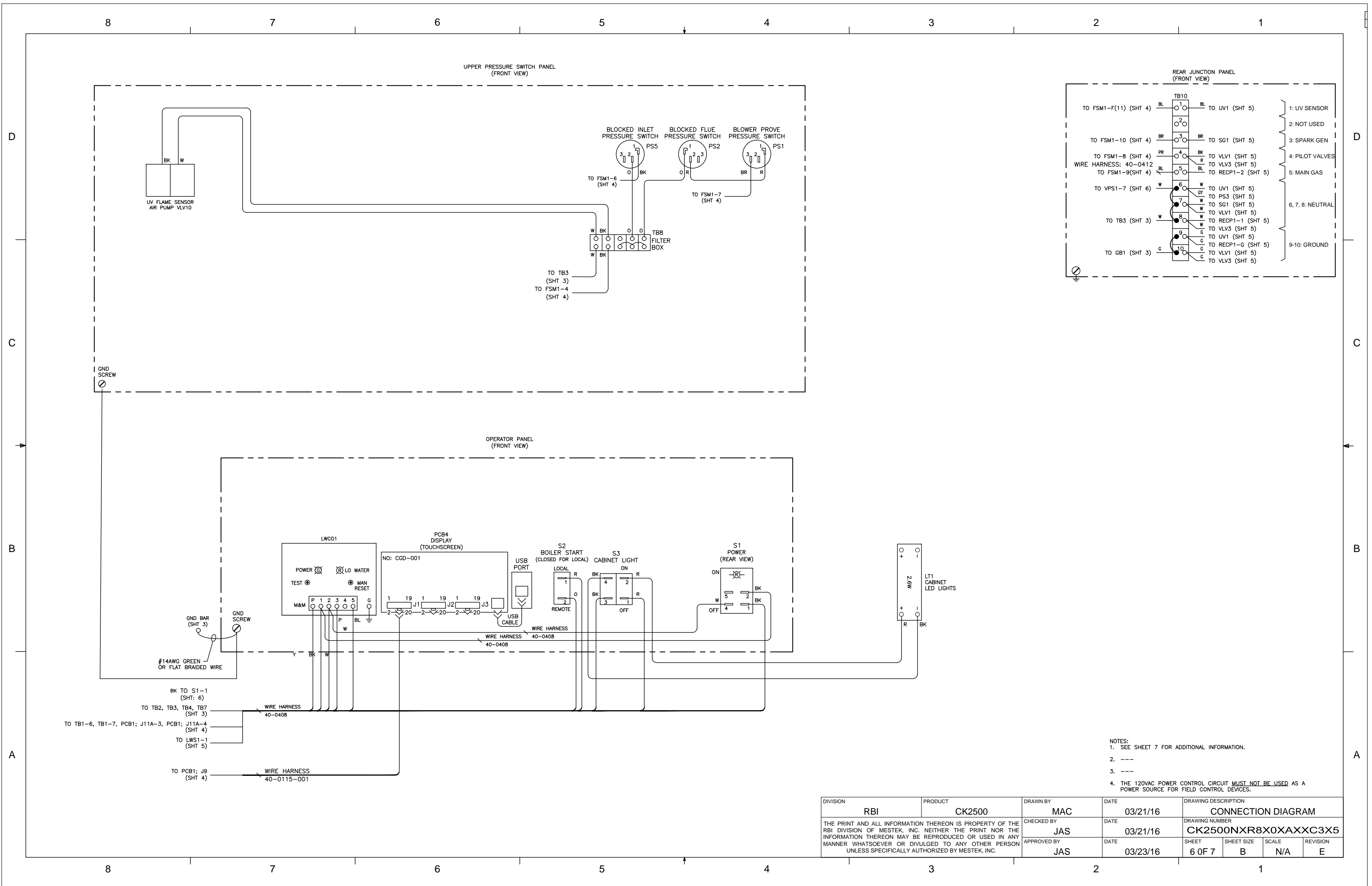


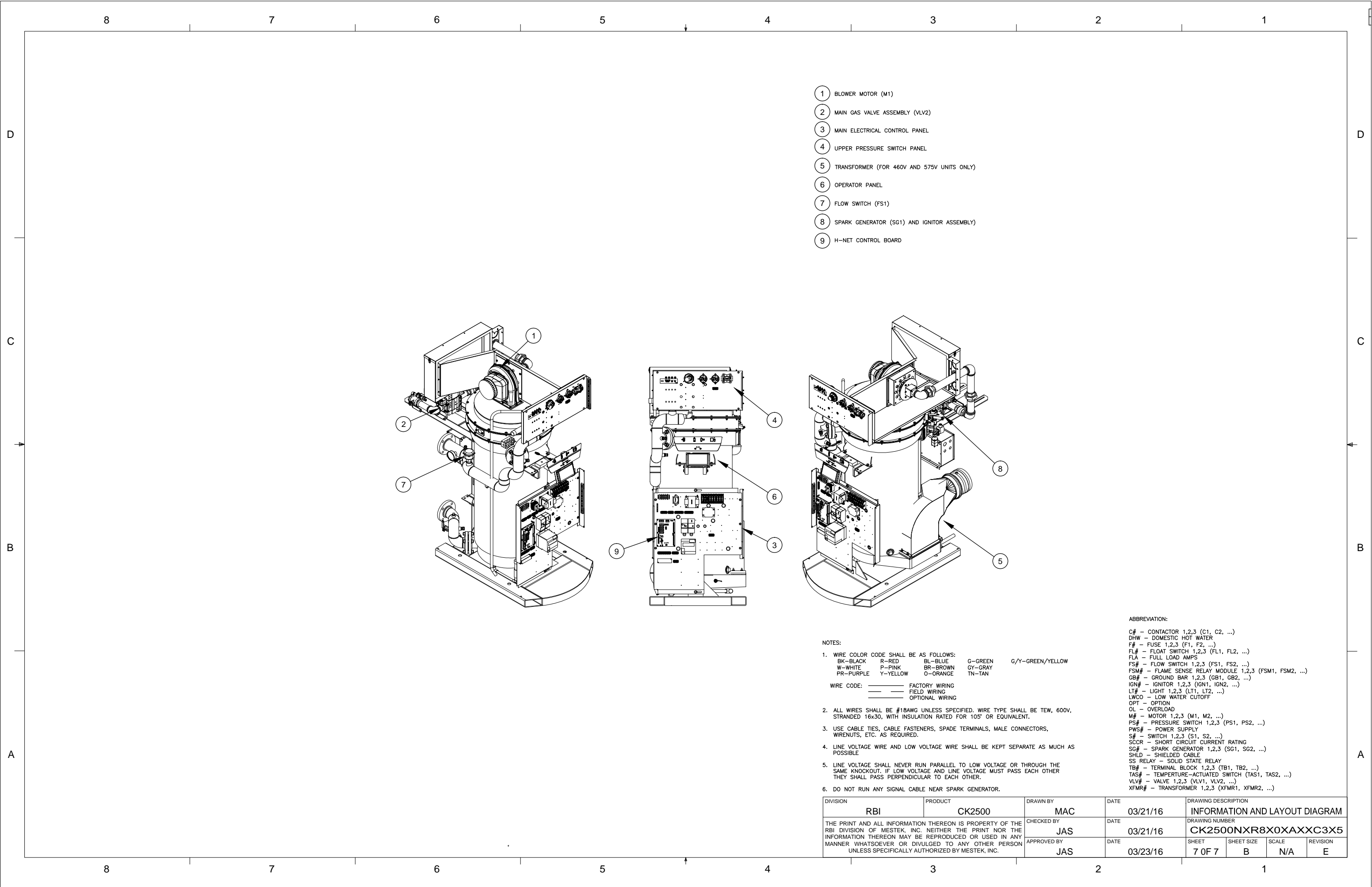
- NOTES:
- 1. SEE SHEET 3 AND 7 FOR ADDITIONAL INFORMATION.
  - 2. REMOVE JUMPER C WHEN USING A CUSTOMER SUPPLIED INTERLOCK.
  - 3. ---
  - 4. THE 120V POWER CONTROL CIRCUIT MUST NOT BE USED AS A POWER SOURCE FOR FIELD CONTROL DEVICES.
  - 5. FOR MULTIPLE BOILERS OPERATING WITH A SYSTEM AIR DAMPER WHEN IN A MASTER/MEMBER CONFIGURATION, ADD A JUMPER FROM TERMINAL TB-16 ON THE MASTER BOILER TO TERMINAL TB-16 ON ALL MEMBER BOILERS.
  - 6. ---
  - 7. ---
  - 8. HEATNET "LITE" CONTROL BOARDS PROVIDED FOR SUBORDINATE CONTROL BOARDS. HEATNET ONLINE, STAGE 2, 3, 4 AND SYSTEM PUMP 2 OUTPUTS ARE NOT AVAILABLE WITH THE H-NET "LITE" CONTROL PCB.
  - 9. CLOSE T1 OR T2 FOR LOW FIRE. CLOSE T1 AND T2 FOR HIGH FIRE.

DIVISION	PRODUCT	DRAWN BY	DATE	DRAWING DESCRIPTION			
RBI	CK2500	MAC	03/21/16	CONNECTION DIAGRAM			
THE PRINT AND ALL INFORMATION THEREON IS PROPERTY OF THE RBI DIVISION OF MESTEK, INC. NEITHER THE PRINT NOR THE INFORMATION THEREON MAY BE REPRODUCED OR USED IN ANY MANNER WHATSOEVER OR DIVULGED TO ANY OTHER PERSON UNLESS SPECIFICALLY AUTHORIZED BY MESTEK, INC.				DRAWING NUMBER			
CHECKED BY	JAS	DATE	03/21/16	CK2500NXR8X0XAXXC3X5			
APPROVED BY	JAS	DATE	03/23/16	SHEET	SHEET SIZE	SCALE	REVISION
				4 OF 7	B	N/A	E



DIVISION	RBI	PRODUCT	CK2500	DRAWN BY	MAC	DATE	03/21/16	DRAWING DESCRIPTION			
				CHECKED BY	JAS	DATE	03/21/16	DRAWING NUMBER			
				APPROVED BY	JAS	DATE	03/23/16	CK2500NXR8X0XAXXC3X5			
								SHEET	5 OF 7	SHEET SIZE	B
								SCALE	N/A	REVISION	E





- 1 BLOWER MOTOR (M1)
- 2 MAIN GAS VALVE ASSEMBLY (VLV2)
- 3 MAIN ELECTRICAL CONTROL PANEL
- 4 UPPER PRESSURE SWITCH PANEL
- 5 TRANSFORMER (FOR 460V AND 575V UNITS ONLY)
- 6 OPERATOR PANEL
- 7 FLOW SWITCH (FS1)
- 8 SPARK GENERATOR (SG1) AND IGNITOR ASSEMBLY
- 9 H-NET CONTROL BOARD

- NOTES:
- WIRE COLOR CODE SHALL BE AS FOLLOWS:  
BK-BLACK R-RED BL-BLUE G-GREEN G/Y-GREEN/YELLOW  
W-WHITE P-PINK BR-BROWN GY-GRAY  
PR-PURPLE Y-YELLOW O-ORANGE TN-TAN
  - WIRE CODE: ——— FACTORY WIRING  
————— FIELD WIRING  
————— OPTIONAL WIRING
  - ALL WIRES SHALL BE #18AWG UNLESS SPECIFIED. WIRE TYPE SHALL BE TEW, 600V, STRANDED 16x30, WITH INSULATION RATED FOR 105° OR EQUIVALENT.
  - USE CABLE TIES, CABLE FASTENERS, SPADE TERMINALS, MALE CONNECTORS, WIRENUTS, ETC. AS REQUIRED.
  - LINE VOLTAGE WIRE AND LOW VOLTAGE WIRE SHALL BE KEPT SEPARATE AS MUCH AS POSSIBLE
  - LINE VOLTAGE SHALL NEVER RUN PARALLEL TO LOW VOLTAGE OR THROUGH THE SAME KNOCKOUT. IF LOW VOLTAGE AND LINE VOLTAGE MUST PASS EACH OTHER THEY SHALL PASS PERPENDICULAR TO EACH OTHER.
  - DO NOT RUN ANY SIGNAL CABLE NEAR SPARK GENERATOR.

- ABBREVIATION:
- C# - CONTACTOR 1,2,3 (C1, C2, ...)
  - DHW - DOMESTIC HOT WATER
  - F# - FUSE 1,2,3 (F1, F2, ...)
  - FL# - FLOAT SWITCH 1,2,3 (FL1, FL2, ...)
  - FLA - FULL LOAD AMPS
  - FS# - FLOW SWITCH 1,2,3 (FS1, FS2, ...)
  - FSM# - FLAME SENSE RELAY MODULE 1,2,3 (FSM1, FSM2, ...)
  - GB# - GROUND BAR 1,2,3 (GB1, GB2, ...)
  - IGN# - IGNITOR 1,2,3 (IGN1, IGN2, ...)
  - LT# - LIGHT 1,2,3 (LT1, LT2, ...)
  - LWCO - LOW WATER CUTOFF
  - OPT - OPTION
  - OL - OVERLOAD
  - M# - MOTOR 1,2,3 (M1, M2, ...)
  - PS# - PRESSURE SWITCH 1,2,3 (PS1, PS2, ...)
  - PWS# - POWER SUPPLY
  - S# - SWITCH 1,2,3 (S1, S2, ...)
  - SCCR - SHORT CIRCUIT CURRENT RATING
  - SG# - SPARK GENERATOR 1,2,3 (SG1, SG2, ...)
  - SHLD - SHIELDED CABLE
  - SS RELAY - SOLID STATE RELAY
  - TB# - TERMINAL BLOCK 1,2,3 (TB1, TB2, ...)
  - TAS# - TEMPATURE-ACTUATED SWITCH (TAS1, TAS2, ...)
  - VLV# - VALVE 1,2,3 (VLV1, VLV2, ...)
  - XFMR# - TRANSFORMER 1,2,3 (XFMR1, XFMR2, ...)

DIVISION	PRODUCT	DRAWN BY	DATE	DRAWING DESCRIPTION			
RBI	CK2500	MAC	03/21/16	INFORMATION AND LAYOUT DIAGRAM			
THE PRINT AND ALL INFORMATION THEREON IS PROPERTY OF THE RBI DIVISION OF MESTEK, INC. NEITHER THE PRINT NOR THE INFORMATION THEREON MAY BE REPRODUCED OR USED IN ANY MANNER WHATSOEVER OR DIVULGED TO ANY OTHER PERSON UNLESS SPECIFICALLY AUTHORIZED BY MESTEK, INC.		CHECKED BY	DATE	DRAWING NUMBER			
		JAS	03/21/16	CK2500NXR8X0XAXXC3X5			
		APPROVED BY	DATE	SHEET	SHEET SIZE	SCALE	REVISION
		JAS	03/23/16	7 OF 7	B	N/A	E